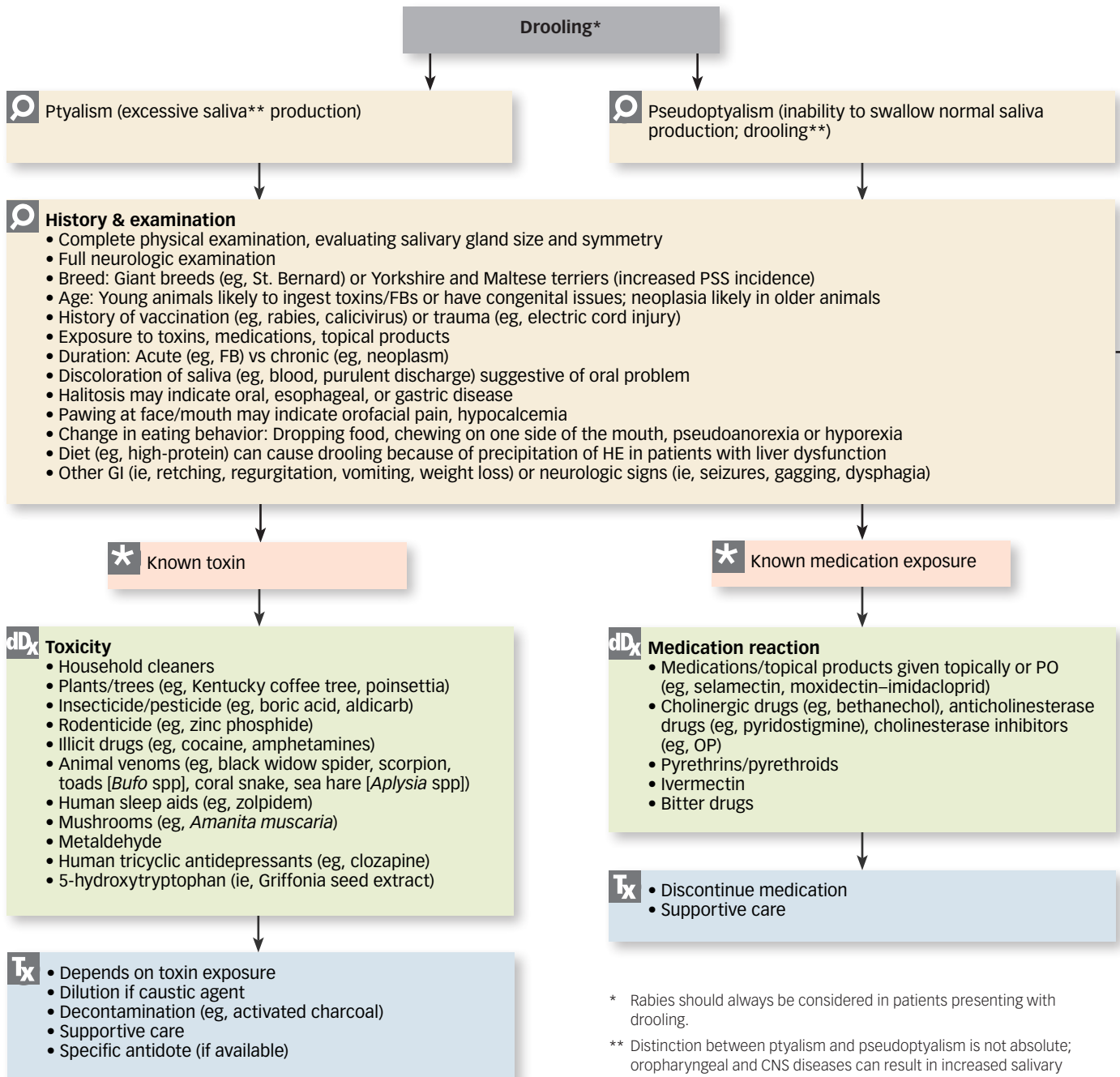


Ptyalism & Pseudoptyalism

Julie Allen, BVMS, MS, DACVIM (Small Animal)

Antech Diagnostics



* Rabies should always be considered in patients presenting with drooling.

** Distinction between ptyalism and pseudoptyalism is not absolute; oropharyngeal and CNS diseases can result in increased salivary production and inability to swallow.

† HE management includes low-protein diet, enemas, oral antibiotics, lactulose, zinc supplementation, supportive care.

AChR Ab = acetylcholine receptor antibody, FB = foreign body, FNA = fine-needle aspiration, HE = hepatic encephalopathy, OP = organophosphates, PSS = portosystemic shunt, SCC = squamous cell carcinoma, T₄ = thyroxine

